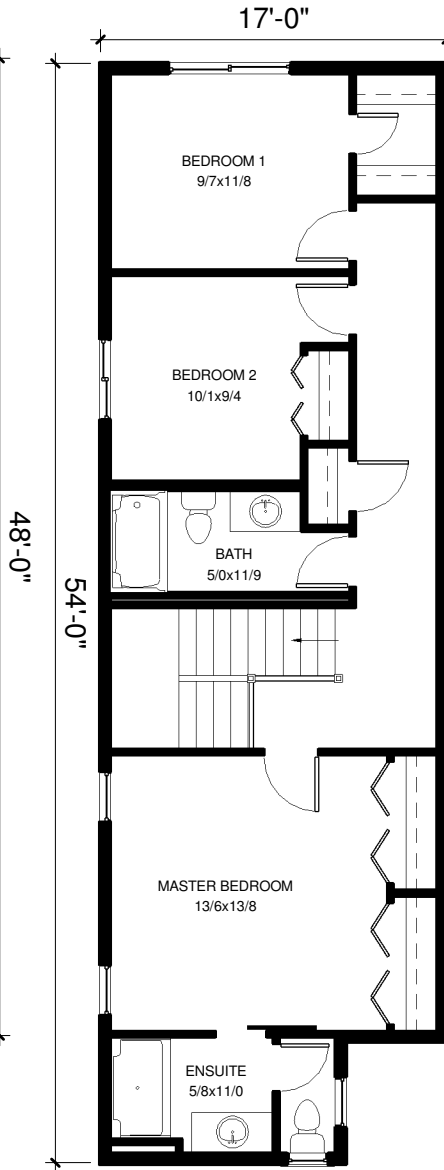
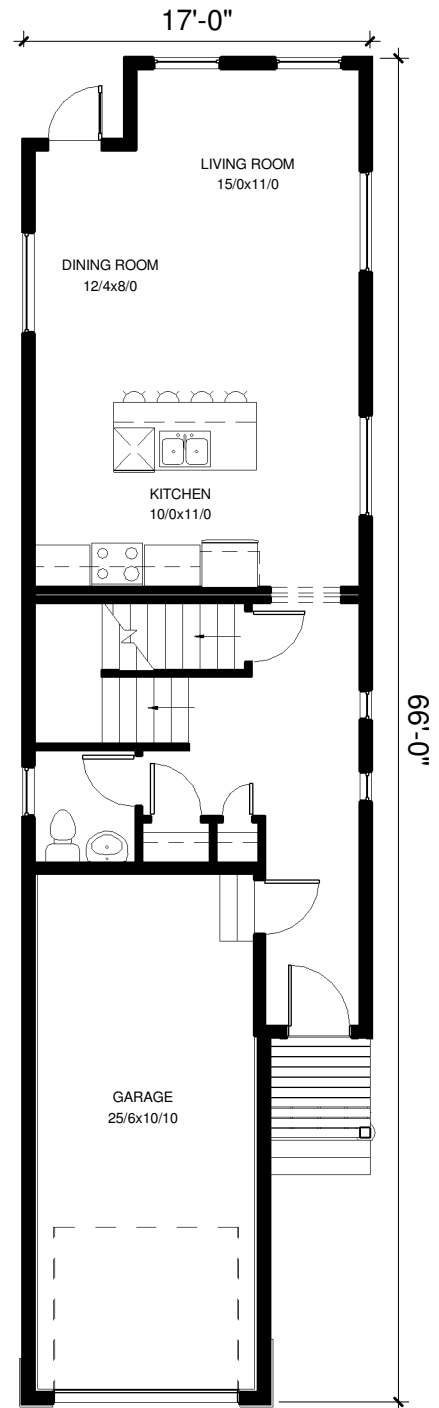


**LOWER FLOOR**  
613 SQ. FT.  
9'-4" WALLS



**UPPER FLOOR**  
826 SQ. FT.  
8'-1 1/8" WALLS



**MAIN FLOOR**  
705 SQ. FT.  
9'-1 1/8" WALLS

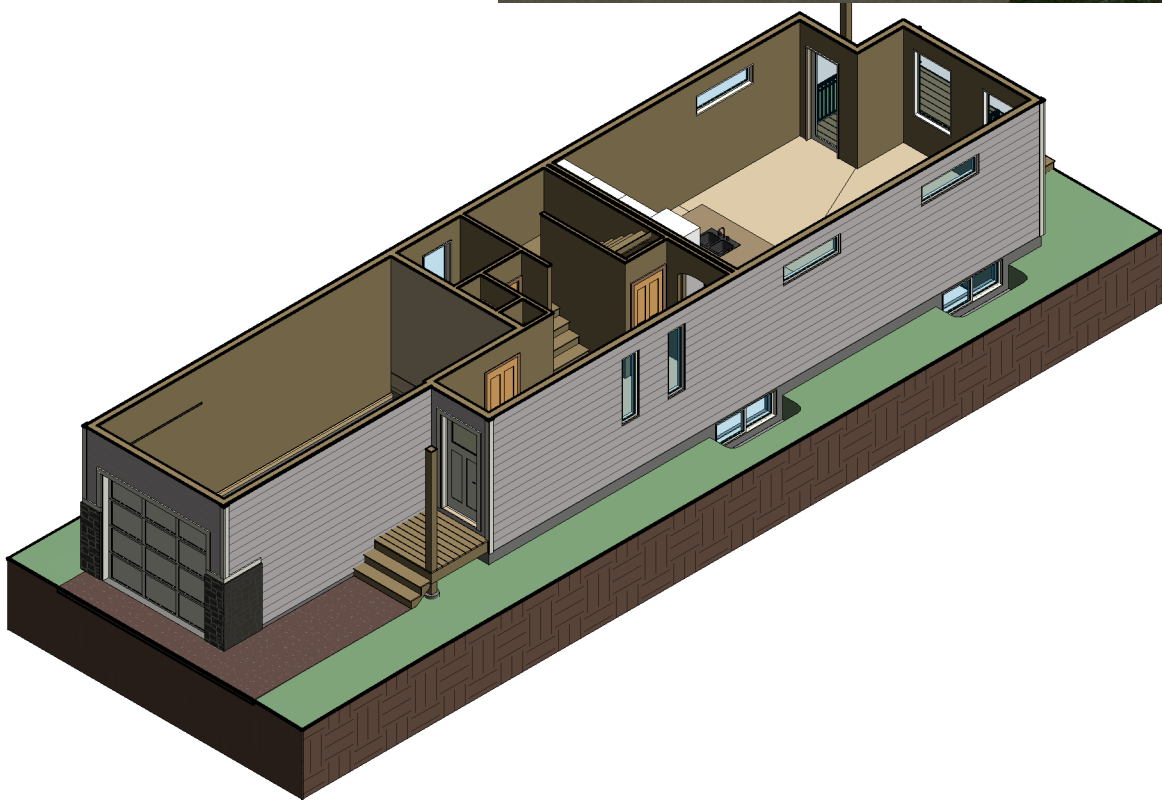


**FRONT ELEVATION**

**TRUE-LINE**  
**DESIGNER - BUILDER**

www.TrueLinehomes.com  
Phone: 403.341.5933

This lovely 2 story home is surprisingly spacious, given its narrow footprint. The main floor has a pleasant great room, a galley kitchen and plenty of space for a dining room table. The upstairs has 2 bedrooms, a full bathroom, and the master bedroom has two closets and an ensuite with a private water closet. The basement has a spare bedroom and an impressive family room.



**TRUE-LINE**  
**DESIGNER - BUILDER**

www.TrueLinehomes.com  
Phone: 403.341.5933

Talk to one of our Sales Consultants  
and find out why we are the  
**True-ly Different Builder**