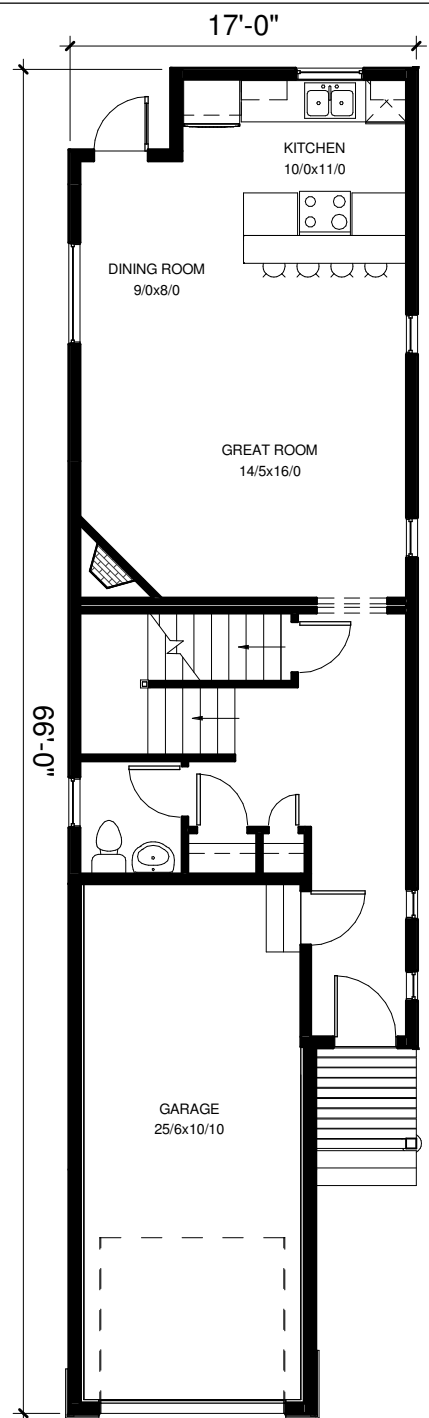
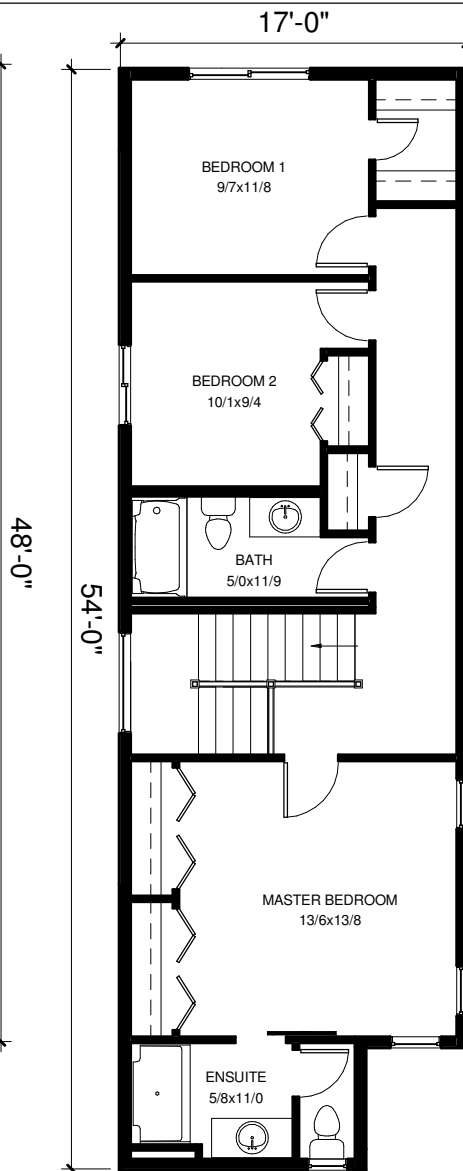


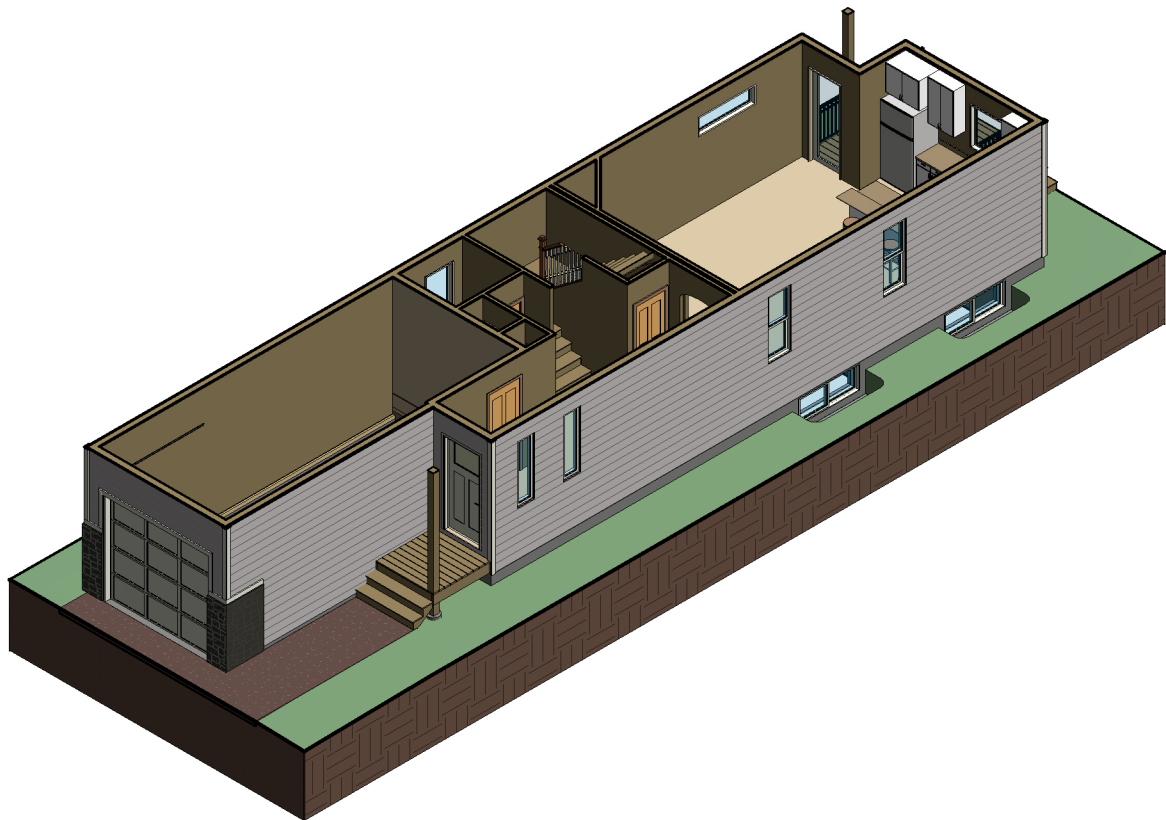
FRONT ELEVATION



**TRUE-LINE**  
DESIGNER - BUILDER

www.TrueLinehomes.com  
Phone: 403.341.5933

This charming 2 story home is surprisingly spacious, given its narrow footprint. On the main floor, there is large great room featuring a gas fireplace, the kitchen is accented with an island featuring a raised eating bar. The upstairs has 2 bedrooms, a full bathroom and a master bedroom with two closets, and an ensuite with a private water closet. The basement has a spare bedroom and a good size family room.



**TRUE-LINE**  
**DESIGNER - BUILDER**

www.TrueLinehomes.com  
Phone: 403.341.5933

Talk to one of our Sales Consultants  
and find out why we are the  
**True-ly Different Builder**