

# TRUE-LINE

DESIGNER - BUILDER

## THE ORLANDO II



## BUNGALOW

- 1103 square foot main floor bi-level
- 3 bedrooms/2 bathrooms
- Features on the reverse

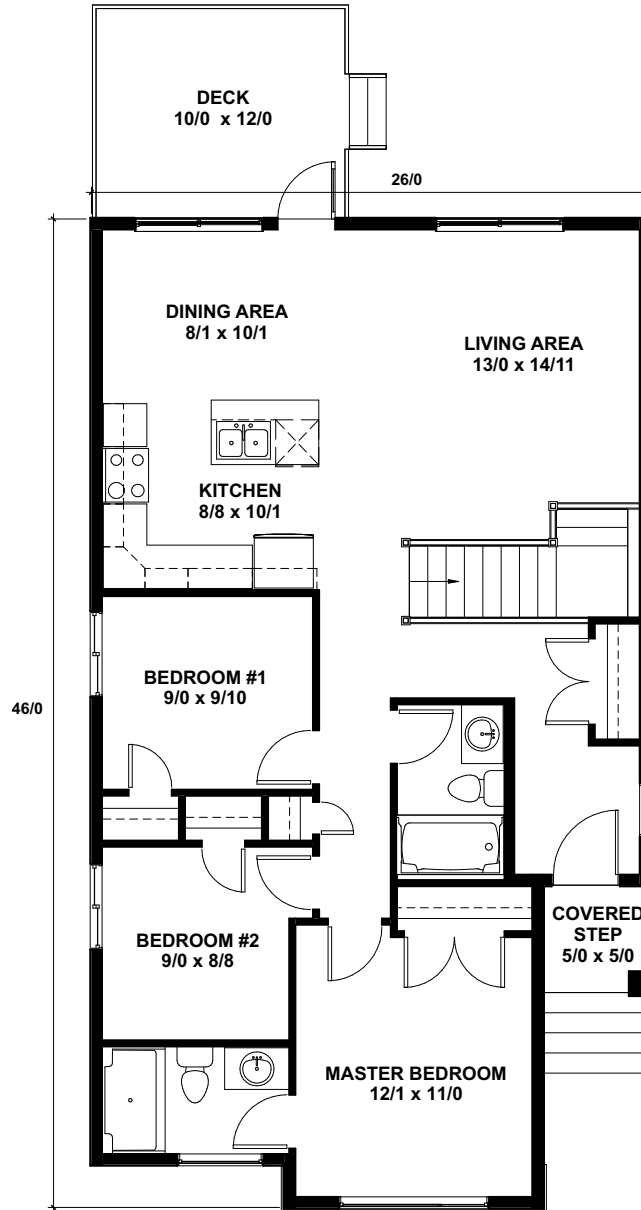


**Builder of the Year**  
& (Large Volume)

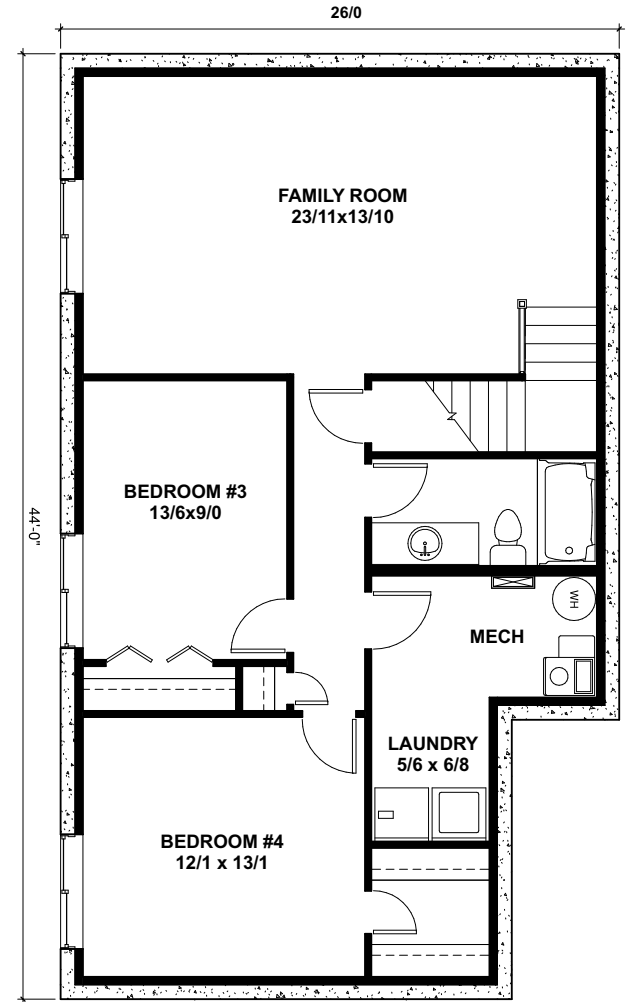
**Renovator of the Year**

TrueLineHomes.com

403.341.5933



**MAIN FLOOR**  
1103 sq. ft.



**FUTURE BASEMENT**  
Aprx. 940 sq. ft.

**Under Construction  
For Sale**

Own today for  
\$347,773\*

# RED DEER

## 66 LIVINGSTON CLOSE

Ask someone who has built with us before and you will hear why we are a True-/y Different Builder!



### TRUE-LINE STANDARD FEATURES ...

- 11 interior door styles to select from
- 5 finishes for door knobs or levers to select from
- Multiple styles of bathroom hardware to select from
- 1 main & 1 accent colour of high quality paint
- Oak or MDF base & case
- Melamine or wire shelves in closets
- Full height tiled kitchen backsplash
- Waterline to fridge
- Drip-free bathroom fans
- Roughed in vacuum system
- TV & phone outlets in all bedrooms & living areas
- Christmas light plugs in soffit with switch in front closet
- 8'4" foundation walls
- 6 mil poly under basement slab
- 16" on centre silent floor system
- Premium sub flooring; glued & nailed
- Poured concrete driveway & sidewalks
- Rock accents on exterior
- Fibreglass shingles
- High-efficient furnace
- Direct Vent water tank
- Tyvec Home Wrap System
- R12 insulation in the basement frost walls
- Insulated rim board R14

### CHOICE FEATURES IN THIS HOME ...

- Maple cabinets with soft close and pot/pan drawers
- Vinyl Plank flooring thru out with Carpet in Bedrooms
- Wired for ceiling fans in bedrooms
- 9' walls on main level
- Rough-in for underslab heat in basement
- Gas line to deck for BBQ
- High-efficient SunStop argon filled windows
- Rear gravel parking area

**Under Construction  
For Sale**

TrueLineHomes.com  
403.341.5933



Central Alberta  
Trust Safety Value



The Alberta New Home Warranty Program



Build this home today: **\$347,773\***  
(including lot & net GST)