



BI-LEVEL

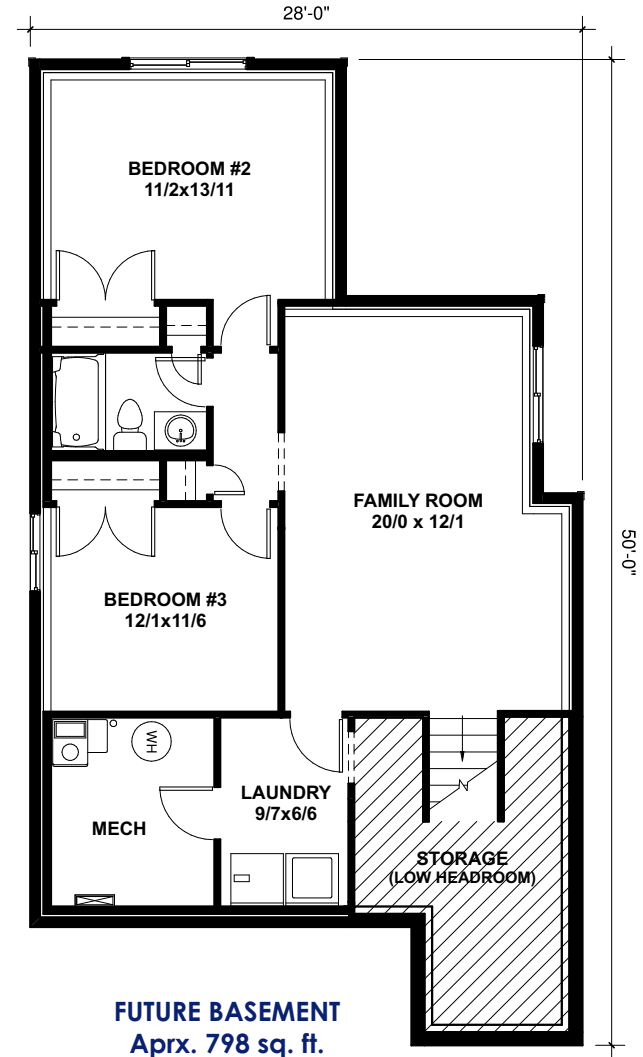
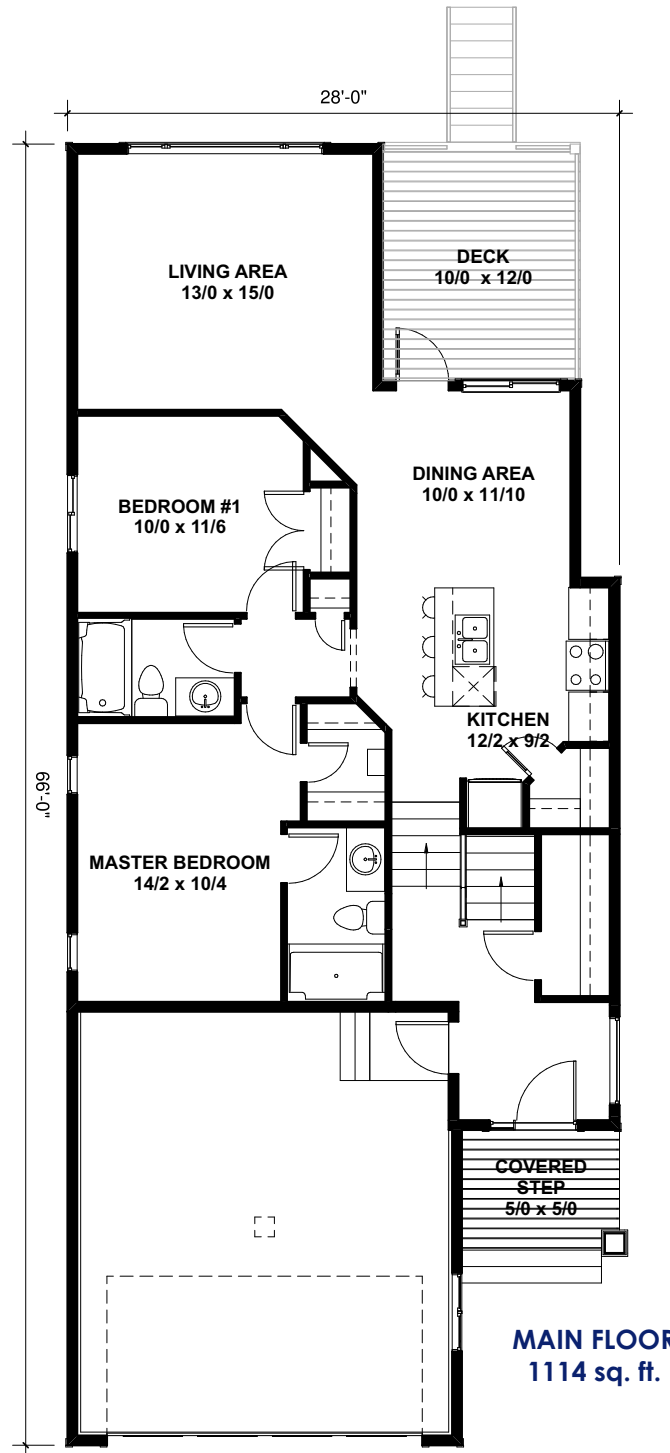
- 1114 square foot main floor Bi-Level
- 2 bedrooms/2 bathrooms
- Features on the reverse



2014 WINNER

Builder of the Year
& (Large Volume)
Renovator of the Year

TrueLineHomes.com
403.341.5933



**Under Construction
For Sale**

Own today for
\$395,930



TRUE-LINE ESSENTIALS ...

- 11 interior door styles to select from
- 5 finishes for door knobs or levers to select from
- Multiple styles of bathroom hardware to select from
- 1 main & 1 accent colour of high quality paint
- Oak or MDF base & case
- Melamine or wire shelves in closets
- Full height tiled kitchen backsplash
- Waterline to fridge
- Drip-free bathroom fans
- Roughed in vacuum system
- TV & phone outlets in all bedrooms & living areas
- Christmas light plugs in soffit with switch in front closet
- 8'4" foundation walls
- 6 mil poly under basement slab
- 16" on centre silent floor system
- Premium sub flooring; glued & nailed
- Poured concrete driveway & sidewalks
- Rock accents on exterior
- Fibreglass shingles
- High-efficient furnace
- Direct vent hot water tank
- Tyvec Home Wrap System
- R12 insulation in the basement frost walls
- Insulated rim board R14

CHOICE FEATURES IN THIS HOME ...

- Maple cabinets, with soft close and pot/pan drawers
- Lino thru out with Carpet in bedrooms
- Wired for ceiling fans in bedrooms
- Covered front step
- 9' walls on main level
- Rough-in for underslab heat in basement
- Gas line to deck for BBQ
- High-efficient SunStop argon filled windows
- High-efficient tankless hot water system
- 20'x22' attached garage w/sump
- Rough-in for garage heater

**Under Construction
For Sale**

TrueLineHomes.com
403.341.5933

Build this home today: \$395,930*
(including lot & net GST)

